

# HIGH VOLTAGE CABLES





# Connecting people and businesses everywhere



**150**

Years of Experience



**+50**

Countries



**33k**

Employees



**+15B**

Sales in Euros

## Sustainability-driven innovation to lead the energy transition and digital transformation

With a legacy spanning over 150 years, Prysmian is a global leader in energy and telecom cable solutions, driving innovation and sustainability. In 2023, we achieved over €15 billion in sales, supported by our 33,000 employees, 82 manufacturing plants, and operations in more than 50 countries worldwide.

We offer the broadest range of cutting-edge products, services, and technologies tailored to meet the evolving needs of our customers. From enabling the energy transition with our pioneering E-Path sustainable cable solution, to supporting critical telecom infrastructure, Prysmian plays a pivotal role in building resilient and efficient systems across the globe.

Our commitment to work closely with our customers ensures that we deliver solutions to help them expand energy and telecom networks, achieving sustainable, profitable growth while addressing the challenges of a rapidly changing world. Together, we're shaping the future of connectivity and electrification.



The planet's pathways

# Our world-leading cable solutions



### Transmission

- Submarine power and telecom systems
- Marine installation through inhouse fleet
- Underground interconnectors up to 525kV DC
- Complete solutions provider:
  - Turn-key execution approach
  - Continuous monitoring
  - Post-installation maintenance



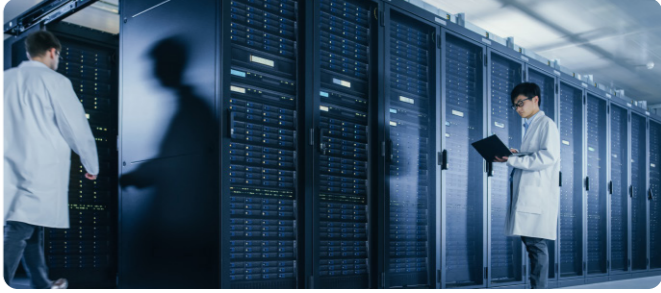
### Power Grid

- HV/EHV AC systems supply and installation
- MV and HV/EHV Network Components (NWC) up to 500kV
- Power Distribution cables' solutions from LV to MV (and up to 69kV)
- Data-driven permanent monitoring systems for power networks



### Electrification

- Renewables
- Specialties & OEM
  - (Railway, Marine, Crane, Mining, Nuclear, Rolling Stock, Defence, Electro medical, other infrastructure)
- Data Centres
- Energy Storage Systems
- OGP Onshore/Offshore & SURF
- Elevators
- Other Industrial
- Residential, Hospitals & Commercial constructions



### Digital Solutions

- Commercial Buildings
  - Passive Optical Cabling
  - Structured Cabling System
  - Building Management
- Data Centre
- Mission Critical and Harsh Environment
- Broadcast and Studio
- Marine & Shipboard

The planet's pathways

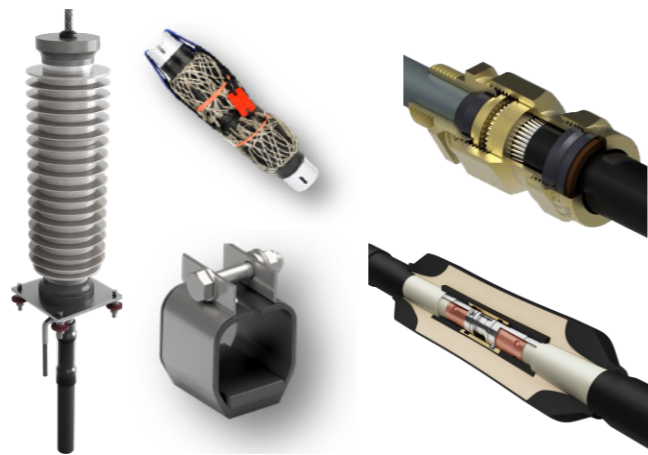


# Network components



## Empowering Reliable Grids with Comprehensive Network Components

We go beyond cables to deliver complete solutions for your transmission and distribution needs. Our extensive portfolio of network components and accessories—including joints, terminations, connectors, and glands—ensures seamless integration with power systems, whether for new installations or upgrades to existing grids. Engineered to the highest standards, our components provide reliability, safety, and performance, supporting utilities in building efficient and robust power networks.



We offer tailored solutions across all voltage classes, including innovative designs for optical fiber integration and asset monitoring systems, reflecting our commitment to sustainability and innovation. Our advanced technologies, such as pre-expanded and cold-shrink options, enable faster, easier installations, reducing downtime and ensuring operational excellence.

Backed by Prysmian's global reach and local expertise, we provide dedicated engineering support and customized designs to meet specific project needs. Together, let's build the future of power systems with network components that are as reliable and innovative as our cables.

# Asset monitoring & systems



## Advanced Sensing Solutions for Proactive Asset Management

Prysmian's Electronic and Optical Sensing Solutions (EOSS) are at the forefront of system integrity monitoring, offering cutting-edge tools to safeguard your critical assets. Our comprehensive platform integrates partial discharge (PD) detection, distributed temperature sensing (DTS), and distributed acoustic sensing (DAS) to provide real-time insights into your system's health. With Pry-Cam solutions for both portable, spot analysis and permanent installation for continuous monitoring, you hold the power to act proactively, ensuring safety, reliability, and costefficiency.



Our systems deliver precise data on temperature variations, partial discharge activity, and acoustic anomalies, enabling informed decision-making to prevent costly repairs or unplanned downtime. Scalable and flexible, the modular design adapts to your evolving needs, while user-friendly interfaces streamline monitoring and analysis.

With EOSS, Prysmian elevates monitoring from reactive to preventive, helping utilities and industries achieve enhanced operational reliability. Discover how EOSS and Pry-Cam can transform your approach to asset management, ensuring the safety and longevity



# Prysmian in the region



Prysmian operates extensively across the Asia Pacific region, supported by a robust infrastructure that includes 13 manufacturing plants across China, Malaysia, Indonesia, the Philippines, and Thailand. Our regional distribution center in Singapore serves as a strategic hub, ensuring seamless delivery of cutting-edge cable solutions for the energy, infrastructure, and telecom markets.

In Asia Pacific, Prysmian is proud to be a part of landmark projects that showcase our expertise and commitment to innovation. These include addressing the complex cable requirements of iconic developments like Marina Bay Sands in Singapore and supporting the ambitious South Vietnam submarine cable projects,

which strengthen regional connectivity. Additionally, Prysmian's advanced solutions have contributed to offshore wind farm developments, highlighting our pivotal role in accelerating the region's transition to renewable energy.

With a clear focus on sustainability and a strong local presence, Prysmian is well-positioned to meet the demands of Asia Pacific's rapidly growing markets. We remain dedicated to delivering innovative technologies that empower our partners and drive the region's progress towards a more connected and

# Our corporate brand

Prysmian has a multi-brand architecture made of three levels: a strong Corporate Brand, Prysmian, which stands for the whole organization. It is the umbrella brand under which all the initiatives regarding the Company worldwide are carried out.



The second level is represented by the three well-known Commercial Brands: Prysmian, Draka and General Cable.



The third level encompasses the wide range of product brands that serve all the markets and applications in which the Company operates.





# Contents

## COPPER CONDUCTOR

### A. COPPER CABLES- LEAD SHEATHED XLPE INSULATION (36/66 KV – 87/150 KV)

- 1C CU/XLPE/CWS/LS/PE+GR – N2XCK2Y 10
- 1C CU/XLPE/CWS/LS/PE/DBT/PE+GR – N2XCKBr2Y 12

### B. COPPER CABLES- LAMINATED ALUMININUM TAPE XLPE INSULATION (36/66 KV – 87/150 KV)

- 1C CU/XLPE/CWS/LAT/PE+GR – N2XC(F)2Y 14
- 1C CU/XLPE/CWS/LAT/PE/DBT/PE+GR – N2XC(F)Br2Y 16

# 36/66(72) & 87/150(170) KV CU/XLPE/CWS/LS/PE - N2XCK2Y



## Construction

- Conductor  
Plain Annealed Copper , Class 2  
Circular Stranded Compacted  
Conductors
- Conductor Screen  
Extruded Semi Conductive  
Compound
- Insulation  
XLPE Compound
- Insulation Screen  
Extruded Semi Conductive  
Compound
- Waterblocking  
Semi Conductive Water Swellable  
Tapes
- Metallic Screen  
Plain Annealed Copper Wires
- Waterblocking  
Semi Conductive Water  
Swellable Tapes
- Metallic Sheath  
Lead Alloy Sheath
- Sheath  
PE ST 7 Compound

## Special Feature On Request

- Waterblocked Conductor
- Flame Retardant Cat.A,B,C
- Flame Retardant Non Category
- Anti-termite
- Anti-Rodent
- Oil Resistance
- UV Resistance
- Low Smoke Zero Halogen

## Applicable Standards

- IEC 60840 Design and Test Guidelines
- AS/NZS 1429-2 Design and Test Guidelines
- IEC 60228 Conductor
- IEC 60332-1 Flame Retardant
- IEC 60332-3-22 Flame Retardant Cat. A
- IEC 60332-3-23 Flame Retardant Cat. B
- IEC 60332-3-24 Flame Retardant Cat. C

## Cores Identification

- Not applicable



IEC 60332-1  
IEC 60332-3-22  
IEC 60332-3-23  
IEC 60332-3-24



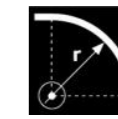
STANDARD



EXCELLENT



0 °C



14 D



NORMAL  
OPERATION  
TEMPERATURE



SHORT  
CIRCUIT  
TEMPERATURE

## Dimension & Electrical Data

| Cross Section      | Tension Uo/U | Conductor Diameter | Insulation Diameter | Metallic Screen Diameter | Metallic Sheath Diameter | Outer Sheath Diameter |  | Cable Weight | Standard Delivery Length | Max.DC Resistance at 20°C | Current Rating in air at 30°C | Current Rating in Ground at 20°C | Conductor Fault Current for 1s | Screen Fault Current for 1s |
|--------------------|--------------|--------------------|---------------------|--------------------------|--------------------------|-----------------------|--|--------------|--------------------------|---------------------------|-------------------------------|----------------------------------|--------------------------------|-----------------------------|
| (mm <sup>2</sup> ) | (kV)         | (mm)               | (mm)                | (mm)                     | (mm)                     | (mm)                  |  | (kg/km)      | (m)                      | (Ω/km)                    | (A)                           | (A)                              | (kA)                           | (kA)                        |
| 1x240              | 36/66        | 18.3               | 46                  | 53                       | 59                       | 65                    |  | 10581        | 500                      | 0.0754                    | 699                           | 517                              | 34.3                           | 31.5                        |
| 1x300              | 36/66        | 20.4               | 46                  | 54                       | 60                       | 66                    |  | 9861         | 500                      | 0.0601                    | 795                           | 574                              | 42.9                           | 31.5                        |
| 1x400              | 36/66        | 23                 | 49                  | 57                       | 63                       | 69                    |  | 11237        | 500                      | 0.047                     | 912                           | 645                              | 57.2                           | 31.5                        |
| 1x500              | 36/66        | 26.4               | 52                  | 60                       | 66                       | 73                    |  | 12900        | 500                      | 0.0366                    | 1045                          | 722                              | 71.5                           | 31.5                        |
| 1x630              | 36/66        | 30.2               | 56                  | 64                       | 70                       | 77                    |  | 15063        | 500                      | 0.0283                    | 1193                          | 802                              | 90.1                           | 31.5                        |
| 1x800              | 36/66        | 34.7               | 58                  | 66                       | 73                       | 80                    |  | 17090        | 500                      | 0.0221                    | 1347                          | 880                              | 114.5                          | 31.5                        |
| 1x1000             | 36/66        | 39                 | 63                  | 71                       | 77                       | 84                    |  | 19886        | 500                      | 0.0176                    | 1484                          | 945                              | 143.1                          | 31.5                        |
| 1x1200             | 36/66        | 42.2               | 66                  | 73                       | 80                       | 88                    |  | 22135        | 500                      | 0.0151                    | 1580                          | 991                              | 171.7                          | 31.5                        |
| 1x240              | 87/150       | 18.1               | 62                  | 69                       | 75                       | 82                    |  | 14218        | 500                      | 0.0754                    | 660                           | 505                              | 34.3                           | 31.5                        |
| 1x300              | 87/150       | 20.2               | 66                  | 73                       | 80                       | 87                    |  | 16307        | 500                      | 0.0601                    | 774                           | 575                              | 42.9                           | 40                          |
| 1x400              | 87/150       | 22.8               | 65                  | 73                       | 79                       | 86                    |  | 16748        | 500                      | 0.047                     | 895                           | 650                              | 57.2                           | 40                          |
| 1x500              | 87/150       | 26.1               | 68                  | 76                       | 83                       | 91                    |  | 18707        | 500                      | 0.0366                    | 1035                          | 735                              | 71.5                           | 40                          |
| 1x630              | 87/150       | 29.9               | 72                  | 80                       | 87                       | 94                    |  | 20589        | 500                      | 0.0283                    | 1010                          | 725                              | 90.1                           | 40                          |
| 1x800              | 87/150       | 34.4               | 78                  | 85                       | 91                       | 100                   |  | 23949        | 500                      | 0.0221                    | 1160                          | 810                              | 114.5                          | 40                          |
| 1x1000             | 87/150       | 38.6               | 82                  | 90                       | 98                       | 106                   |  | 26837        | 500                      | 0.0176                    | 1325                          | 905                              | 143.1                          | 40                          |
| 1x1200             | 87/150       | 41.8               | 84                  | 91                       | 99                       | 107                   |  | 29045        | 500                      | 0.0151                    | 1571                          | 1015                             | 171.7                          | 40                          |

# 36/66(72) - 87/150(170) KV CU/XLPE/CWS/LS/PE/DBT/PE - N2XCKBr2Y



## Construction

- Conductor  
Plain Annealed Copper , Class 2  
Circular Stranded Compacted  
Conductors
- Conductor Screen  
Extruded Semi Conductive  
Compound
- Insulation  
XLPE Compound
- Insulation Screen  
Extruded Semi Conductive  
Compound
- Waterblocking  
Semi Conductive Water Swellable  
Tapes
- Metallic Screen  
Plain Annealed Copper Wires
- Waterblocking  
Semi Conductive Water Swellable  
Tapes
- Metallic Sheath  
Lead Alloy Sheath
- Separation Sheath  
PE ST 7 Compound
- Termite Protection  
Double Brass Type
- Sheath  
PE ST 7 Compound

## Special Feature On Request

- Waterblocked Conductor
- Flame Retardant Cat.A,B,C
- Flame Retardant Non Category
- Anti-termite
- Anti-Rodent
- Oil Resistance
- UV Resistance
- Low Smoke Zero Halogen

## Applicable Standards

- IEC 60840 Design and Test Guidelines
- AS/NZS 1429-2 Design and Test Guidelines
- IEC 60228 Conductor
- IEC 60332-1 Flame Retardant
- IEC 60332-3-22 Flame Retardant Cat. A
- IEC 60332-3-23 Flame Retardant Cat. B
- IEC 60332-3-24 Flame Retardant Cat. C

## Cores Identification

- Not applicable



IEC 60332-1  
IEC 60332-3-22  
IEC 60332-3-23  
IEC 60332-3-24



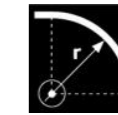
STANDARD



EXCELLENT



0°C



14 D



90°C  
NORMAL  
OPERATION  
TEMPERATURE



250°C  
SHORT  
CIRCUIT  
TEMPERATURE

## Dimension & Electrical Data

| Cross Section (mm <sup>2</sup> ) | Tension U <sub>0</sub> /U (kV) | Conductor Diameter (mm) | Insulation Diameter (mm) | Metallic Screen Diameter (mm) | Metallic Sheath Diameter (mm) | Sep Sheath Diameter (mm) | Armour Diameter (kg/km) | Outer Sheath Diameter (mm) | Cable Weight (kg/km) | Standard Delivery Length (m) | Max.DC Resistance at 20°C (Ω/km) | Current Rating in air at 30°C (A) | Current Rating in Ground at 20°C (A) | Conductor Fault Current for 1s (kA) | Screen Fault Current for 1s (kA) |
|----------------------------------|--------------------------------|-------------------------|--------------------------|-------------------------------|-------------------------------|--------------------------|-------------------------|----------------------------|----------------------|------------------------------|----------------------------------|-----------------------------------|--------------------------------------|-------------------------------------|----------------------------------|
| 1x240                            | 36/66                          | 18.3                    | 47                       | 54                            | 61                            | 64                       | 65                      | 71                         | 12759                | 500                          | 0.0754                           | 705                               | 520                                  | 34.3                                | 31.5                             |
| 1x300                            | 36/66                          | 20.4                    | 47                       | 54                            | 61                            | 64                       | 65                      | 71                         | 13227                | 500                          | 0.0601                           | 808                               | 585                                  | 42.9                                | 31.5                             |
| 1x400                            | 36/66                          | 23                      | 50                       | 57                            | 64                            | 67                       | 68                      | 75                         | 14489                | 500                          | 0.047                            | 932                               | 661                                  | 57.2                                | 31.5                             |
| 1x500                            | 36/66                          | 26.4                    | 53                       | 61                            | 67                            | 70                       | 71                      | 78                         | 15989                | 500                          | 0.0366                           | 1074                              | 747                                  | 71.5                                | 31.5                             |
| 1x630                            | 36/66                          | 30.2                    | 57                       | 64                            | 71                            | 74                       | 75                      | 83                         | 18219                | 500                          | 0.0283                           | 1238                              | 842                                  | 90.1                                | 31.5                             |
| 1x800                            | 36/66                          | 34.7                    | 60                       | 67                            | 74                            | 77                       | 78                      | 85                         | 20453                | 500                          | 0.0221                           | 1414                              | 935                                  | 114.5                               | 31.5                             |
| 1x1000                           | 36/66                          | 39                      | 64                       | 71                            | 78                            | 81                       | 83                      | 90                         | 24244                | 500                          | 0.0176                           | 1577                              | 1019                                 | 143.1                               | 31.5                             |
| 1x1200                           | 36/66                          | 42.2                    | 67                       | 74                            | 82                            | 85                       | 86                      | 94                         | 26615                | 500                          | 0.0151                           | 1692                              | 1079                                 | 171.7                               | 31.5                             |
| 1x240                            | 87/150                         | 18.3                    | 65                       | 72                            | 80                            | 83                       | 85                      | 93                         | 19016                | 500                          | 0.0754                           | 682                               | 514                                  | 34.3                                | 31.5                             |
| 1x300                            | 87/150                         | 20.4                    | 65                       | 73                            | 81                            | 84                       | 85                      | 94                         | 20347                | 500                          | 0.0601                           | 778                               | 575                                  | 42.9                                | 40                               |
| 1x400                            | 87/150                         | 23                      | 67                       | 74                            | 82                            | 85                       | 87                      | 95                         | 20996                | 500                          | 0.047                            | 900                               | 652                                  | 57.2                                | 40                               |
| 1x500                            | 87/150                         | 26.4                    | 70                       | 77                            | 85                            | 88                       | 90                      | 98                         | 22652                | 500                          | 0.0366                           | 1038                              | 737                                  | 71.5                                | 40                               |
| 1x630                            | 87/150                         | 30.2                    | 74                       | 81                            | 89                            | 92                       | 94                      | 102                        | 25193                | 500                          | 0.0283                           | 1194                              | 829                                  | 90.1                                | 40                               |
| 1x800                            | 87/150                         | 34.7                    | 78                       | 86                            | 94                            | 97                       | 99                      | 107                        | 28160                | 500                          | 0.0221                           | 1357                              | 921                                  | 114.5                               | 40                               |
| 1x1000                           | 87/150                         | 39                      | 82                       | 90                            | 98                            | 101                      | 103                     | 112                        | 31358                | 500                          | 0.0176                           | 1521                              | 1014                                 | 143.1                               | 40                               |
| 1x1200                           | 87/150                         | 42.2                    | 86                       | 93                            | 101                           | 105                      | 106                     | 115                        | 33900                | 500                          | 0.0151                           | 1624                              | 1066                                 | 171.7                               | 40                               |

# 36/66(72) & 87/150(170) KV CU/XLPE/CWS/LAT/PE - N2X(F)2Y



## Construction

- Conductor
  - Plain Annealed Copper , Class 2
  - Circular Stranded Compacted Conductors
- Conductor Screen
  - Extruded Semi Conductive Compound
- Insulation
  - XLPE Compound
- Insulation Screen
  - Extruded Semi Conductive Compound
- Waterblocking
  - Semi Conductive Water Swellable Tapes
- Metallic Screen
  - Plain Annealed Copper Wires
- Waterblocking
  - Semi Conductive Water Swellable Tapes
- Moisture Barrier
  - Laminated Aluminium Tape
- Sheath
  - PE ST 7 Compound

## Special Feature On Request

- Waterblocked Conductor
- Flame Retardant Cat.A,B,C
- Flame Retardant Non Category
- Anti-termite
- Anti-Rodent
- Oil Resistance
- UV Resistance
- Low Smoke Zero Halogen

## Applicable Standards

- IEC 60840 Design and Test Guidelines
- AS/NZS 1429-2 Design and Test Guidelines
- IEC 60228 Conductor
- IEC 60332-1 Flame Retardant
- IEC 60332-3-22 Flame Retardant Cat. A
- IEC 60332-3-23 Flame Retardant Cat. B
- IEC 60332-3-24 Flame Retardant Cat. C

## Cores Identification

- Not applicable



IEC 60332-1  
IEC 60332-3-22  
IEC 60332-3-23  
IEC 60332-3-24



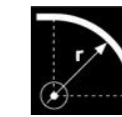
STANDARD



EXCELLENT



0 °C



14 D



90 °C  
NORMAL  
OPERATION  
TEMPERATURE



250 °C  
SHORT  
CIRCUIT  
TEMPERATURE

## Dimension & Electrical Data

| Cross Section      | Tension U <sub>0</sub> /U | Conductor Diameter | Insulation Diameter | Metallic Screen Diameter | Outer Sheath Diameter | Cable Weight |  | Standard Delivery Length | Max.DC Resistance at 20°C | Current Rating in air at 30°C | Current Rating in Ground at 20°C | Conductor Fault Current | Screen Fault Current |
|--------------------|---------------------------|--------------------|---------------------|--------------------------|-----------------------|--------------|--|--------------------------|---------------------------|-------------------------------|----------------------------------|-------------------------|----------------------|
| (mm <sup>2</sup> ) | (kV)                      | (mm)               | (mm)                | (mm)                     | (mm)                  | (kg/km)      |  | (m)                      | (Ω/km)                    | (A)                           | (A)                              | (kA)                    | (kA)                 |
| 1x240              | 36/66                     | 18.3               | 47                  | 55                       | 62                    | 6262         |  | 500                      | 0.0754                    | 689                           | 514                              | 34.3                    | 31.5                 |
| 1x300              | 36/66                     | 20.4               | 47                  | 55                       | 62                    | 6724         |  | 500                      | 0.0601                    | 784                           | 573                              | 42.9                    | 31.5                 |
| 1x400              | 36/66                     | 23                 | 49                  | 57                       | 65                    | 7651         |  | 500                      | 0.047                     | 900                           | 645                              | 57.2                    | 31.5                 |
| 1x500              | 36/66                     | 26.4               | 53                  | 61                       | 69                    | 8781         |  | 500                      | 0.0366                    | 1035                          | 726                              | 71.5                    | 31.5                 |
| 1x630              | 36/66                     | 30.2               | 57                  | 65                       | 73                    | 10287        |  | 250                      | 0.0283                    | 1186                          | 809                              | 90.1                    | 31.5                 |
| 1x800              | 36/66                     | 34.7               | 60                  | 68                       | 76                    | 12077        |  | 250                      | 0.0221                    | 1347                          | 893                              | 114.5                   | 31.5                 |
| 1x1000             | 36/66                     | 39                 | 64                  | 72                       | 80                    | 14180        |  | 250                      | 0.0176                    | 1493                          | 967                              | 143.1                   | 31.5                 |
| 1x1200             | 36/66                     | 42.2               | 67                  | 75                       | 83                    | 15826        |  | 250                      | 0.0151                    | 1589                          | 1012                             | 171.7                   | 31.5                 |
| 1x240              | 87/150                    | 18.3               | 65                  | 73                       | 82                    | 8211         |  | 500                      | 0.0754                    | 668                           | 503                              | 34.3                    | 31.5                 |
| 1x300              | 87/150                    | 20.4               | 65                  | 74                       | 83                    | 9197         |  | 500                      | 0.0601                    | 760                           | 562                              | 42.9                    | 40                   |
| 1x400              | 87/150                    | 23                 | 66                  | 74                       | 84                    | 10022        |  | 250                      | 0.047                     | 875                           | 634                              | 57.2                    | 40                   |
| 1x500              | 87/150                    | 26.4               | 69                  | 77                       | 87                    | 11217        |  | 250                      | 0.0366                    | 1004                          | 712                              | 71.5                    | 40                   |
| 1x630              | 87/150                    | 30.2               | 74                  | 82                       | 91                    | 12794        |  | 250                      | 0.0283                    | 1152                          | 796                              | 90.1                    | 40                   |
| 1x800              | 87/150                    | 34.7               | 78                  | 86                       | 96                    | 14910        |  | 250                      | 0.0221                    | 1304                          | 878                              | 114.5                   | 40                   |
| 1x1000             | 87/150                    | 39                 | 82                  | 91                       | 101                   | 17205        |  | 250                      | 0.0176                    | 1446                          | 952                              | 143.1                   | 40                   |
| 1x1200             | 87/150                    | 42.2               | 86                  | 94                       | 104                   | 18949        |  | 250                      | 0.0151                    | 1544                          | 1001                             | 171.7                   | 40                   |



# 36/66(72) - 87/150(170) KV CU/XLPE/CWS/LAT/PE/DBT/PE - N2XC(F)Br2Y



## Construction

- Conductor  
Plain Annealed Copper , Class 2  
Circular Stranded Compacted  
Conductors
- Conductor Screen  
Extruded Semi Conductive  
Compound
- Insulation  
XLPE Compound
- Insulation Screen  
Extruded Semi Conductive  
Compound
- Waterblocking  
Semi Conductive Water Swellable  
Tapes
- Metallic Screen  
Plain Annealed Copper Wires
- Waterblocking  
Semi Conductive Water  
Swellable Tapes
- Moisture Barrier  
Laminated Aluminium Tape
- Separation Sheath  
PE ST7 Compound
- Termite Protection  
Double Brass Tape
- Sheath  
PE ST 7 Compound

## Special Feature On Request

- Waterblocked Conductor
- Flame Retardant Cat.A,B,C
- Flame Retardant Non Category
- Anti-termite
- Anti-Rodent
- Oil Resistance
- UV Resistance
- Low Smoke Zero Halogen

## Applicable Standards

- IEC 60840 Design and Test Guidelines
- AS/NZS 1429-2 Design and Test Guidelines
- IEC 60228 Conductor
- IEC 60332-1 Flame Retardant
- IEC 60332-3-22 Flame Retardant Cat. A
- IEC 60332-3-23 Flame Retardant Cat. B
- IEC 60332-3-24 Flame Retardant Cat. C

## Cores Identification

- Not applicable



IEC 60332-1  
IEC 60332-3-22  
IEC 60332-3-23  
IEC 60332-3-24



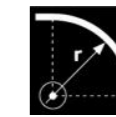
STANDARD



EXCELLENT



0 °C



14 D



90 °C  
NORMAL  
OPERATION  
TEMPERATURE



250 °C  
SHORT  
CIRCUIT  
TEMPERATURE

## Dimension & Electrical Data

| Cross Section      | Tension Uo/U | Conductor Diameter | Insulation Diameter | Metallic Screen Diameter | Sep Sheath Diameter | Armour Diameter | Outer Sheath Diameter | Cable Weight |  | Standard Delivery Length | Max.DC Resistance at 20°C | Current Rating in air at 30°C | Current Rating in Ground at 20°C | Conductor Fault Current for 1s | Screen Fault Current for 1s |
|--------------------|--------------|--------------------|---------------------|--------------------------|---------------------|-----------------|-----------------------|--------------|--|--------------------------|---------------------------|-------------------------------|----------------------------------|--------------------------------|-----------------------------|
| (mm <sup>2</sup> ) | (kV)         | (mm)               | (mm)                | (mm)                     | (mm)                | (kg/km)         | (mm)                  | (kg/km)      |  | (m)                      | (Ω/km)                    | (A)                           | (A)                              | (kA)                           | (kA)                        |
| 1x240              | 36/66        | 18.3               | 47                  | 55                       | 59                  | 59              | 66                    | 6770         |  | 1000                     | 0.0754                    | 697                           | 515                              | 34.3                           | 31.5                        |
| 1x300              | 36/66        | 20.4               | 47                  | 55                       | 59                  | 59              | 66                    | 7232         |  | 1000                     | 0.0601                    | 797                           | 578                              | 42.9                           | 31.5                        |
| 1x400              | 36/66        | 23                 | 49                  | 57                       | 62                  | 62              | 69                    | 8182         |  | 1000                     | 0.047                     | 916                           | 651                              | 57.2                           | 31.5                        |
| 1x500              | 36/66        | 26.4               | 53                  | 61                       | 65                  | 65              | 72                    | 9340         |  | 1000                     | 0.0366                    | 1052                          | 732                              | 71.5                           | 31.5                        |
| 1x630              | 36/66        | 30.2               | 57                  | 65                       | 70                  | 70              | 76                    | 10875        |  | 500                      | 0.0283                    | 1208                          | 818                              | 90.1                           | 31.5                        |
| 1x800              | 36/66        | 34.7               | 60                  | 68                       | 72                  | 72              | 79                    | 12685        |  | 500                      | 0.0221                    | 1373                          | 903                              | 114.5                          | 31.5                        |
| 1x1000             | 36/66        | 39                 | 64                  | 72                       | 76                  | 77              | 83                    | 14824        |  | 500                      | 0.0176                    | 1525                          | 981                              | 143.1                          | 31.5                        |
| 1x1200             | 36/66        | 42.2               | 67                  | 75                       | 80                  | 80              | 87                    | 16523        |  | 500                      | 0.0151                    | 1623                          | 1028                             | 171.7                          | 31.5                        |
| 1x240              | 87/150       | 18.3               | 65                  | 73                       | 78                  | 78              | 86                    | 8926         |  | 1000                     | 0.0754                    | 674                           | 507                              | 34.3                           | 31.5                        |
| 1x300              | 87/150       | 20.4               | 65                  | 74                       | 78                  | 78              | 87                    | 9949         |  | 1000                     | 0.0601                    | 769                           | 567                              | 42.9                           | 40                          |
| 1x400              | 87/150       | 23                 | 66                  | 74                       | 79                  | 79              | 87                    | 10700        |  | 1000                     | 0.047                     | 884                           | 639                              | 57.2                           | 40                          |
| 1x500              | 87/150       | 26.4               | 69                  | 77                       | 82                  | 82              | 91                    | 11949        |  | 500                      | 0.0366                    | 1017                          | 719                              | 71.5                           | 40                          |
| 1x630              | 87/150       | 30.2               | 74                  | 82                       | 86                  | 87              | 95                    | 13581        |  | 500                      | 0.0283                    | 1166                          | 803                              | 90.1                           | 40                          |
| 1x800              | 87/150       | 34.7               | 78                  | 86                       | 91                  | 91              | 99                    | 15744        |  | 500                      | 0.0221                    | 1322                          | 888                              | 114.5                          | 40                          |
| 1x1000             | 87/150       | 39                 | 82                  | 91                       | 95                  | 95              | 104                   | 18012        |  | 500                      | 0.0176                    | 1470                          | 967                              | 143.1                          | 40                          |
| 1x1200             | 87/150       | 42.2               | 86                  | 94                       | 99                  | 99              | 107                   | 19783        |  | 500                      | 0.0151                    | 1560                          | 1007                             | 171.7                          | 40                          |

# Sales & marketing offices

## SINGAPORE

**Prysmian APAC**  
**Singapore Cables Manufacturers Pte Ltd**  
No 20 Jurong Port Road, Jurong Town  
SINGAPORE 619094  
Email: sales.asean@prysmian.com  
Tel: +65 6265 0707 Fax +65 6265 2226

**Prysmian PowerLink S.R.L.**  
**Singapore Branch**  
**(Submarine and EHV Systems)**  
No 20 Jurong Port Road, Jurong Town  
SINGAPORE 619094  
Email: sales.asean@prysmian.com  
Tel: +65 6461 7800 Fax: +65 6898 3590

## INDONESIA

**PT Prysmian Cables Indonesia**  
Perkantoran Hijau Arkadia, Tower F, 7th Floor Suite 701  
JI TB Simatupang Kav 88, Jakarta 12520  
INDONESIA  
Email: commercial.indonesia@prysmian.com  
Tel: +62 21 781 6515 Fax +62 21 781 6504

## MALAYSIA

**Sindutch Cable Manufacturer Sdn Bhd**  
Suite 1201-3, Tower 2, Wisma Amfirst Jalan SS7/15 Off,  
Jalan Stadium, SS 3, 47301 Petaling Jaya, Selangor  
MALAYSIA  
Email: scmm@prysmian.com  
Tel +60 3 7803 7171 Fax: +60 3 7803 7575

## THAILAND

**MCI-Draka Cable Co Ltd**  
2170 Bangkok Tower, Phetchaburi Rd,  
Bangkapi, Huai Khwang,  
Bangkok 10310  
THAILAND  
Email: info.th@prysmian.com  
Tel: +662 3080 830 Fax: +662 6080 054

## VIETNAM

**Singapore Cables Manufacturers Pte Ltd**  
Vietnam Rep Office  
Unit 1605, 16th Floor, Havana Tower  
132 Ham Nghi Street, Dist 1, HCMC 70000  
VIETNAM  
Email: sales.asean@prysmian.com  
Tel: + 84 28 392 60581 Fax: +84 28 392 60580

# Manufacturing plants

## SINGAPORE

**Singapore Cables Manufacturers Pte Ltd**  
**(Warehouse)**  
No 20 Jurong Port Road, Jurong Town  
SINGAPORE 619094  
Email: sales.asean@prysmian.com  
Tel: +65 6265 0707 Fax +65 6265 2226

## INDONESIA

**PT Prysmian Cables Indonesia**  
Kawasan Industri Indotaisei, Blok G-1,  
Kota Bukit Indah, Cikampek 41373,  
Jawa Barat, INDONESIA  
Email: commercial.indonesia@prysmian.com  
Tel: +62 264 351 222 Fax: +62 264 351 778

## MALAYSIA

**Sindutch Cable Manufacturer Sdn Bhd**  
Lot 38, Jalan Industri 11,  
Alor Gajah Industrial Estate  
78000 Alor Gajah, Melaka  
MALAYSIA  
Email: scmm@prysmian.com  
Tel: +60 6 5563 833 Fax: +60 6 5563 282

## THAILAND

**Rayong Factory**  
2/7 Ban-bueng Bankhai Road KM 57,  
Nongbua Moo 2, Ban Khai, Rayong 21120  
THAILAND  
Email: info.th@prysmian.com  
Tel: +66 38 961 158 Fax: +66 38 961 167

## Certification Partners







[www.prysmian.com](http://www.prysmian.com)

Follow us

