



A L E S E A

YOUR VIRTUAL ASSISTANT FOR CABLE MANAGEMENT

Company Presentation



ALESEA

Home

About Us

Solutions ▾

Industries ▾

Resources

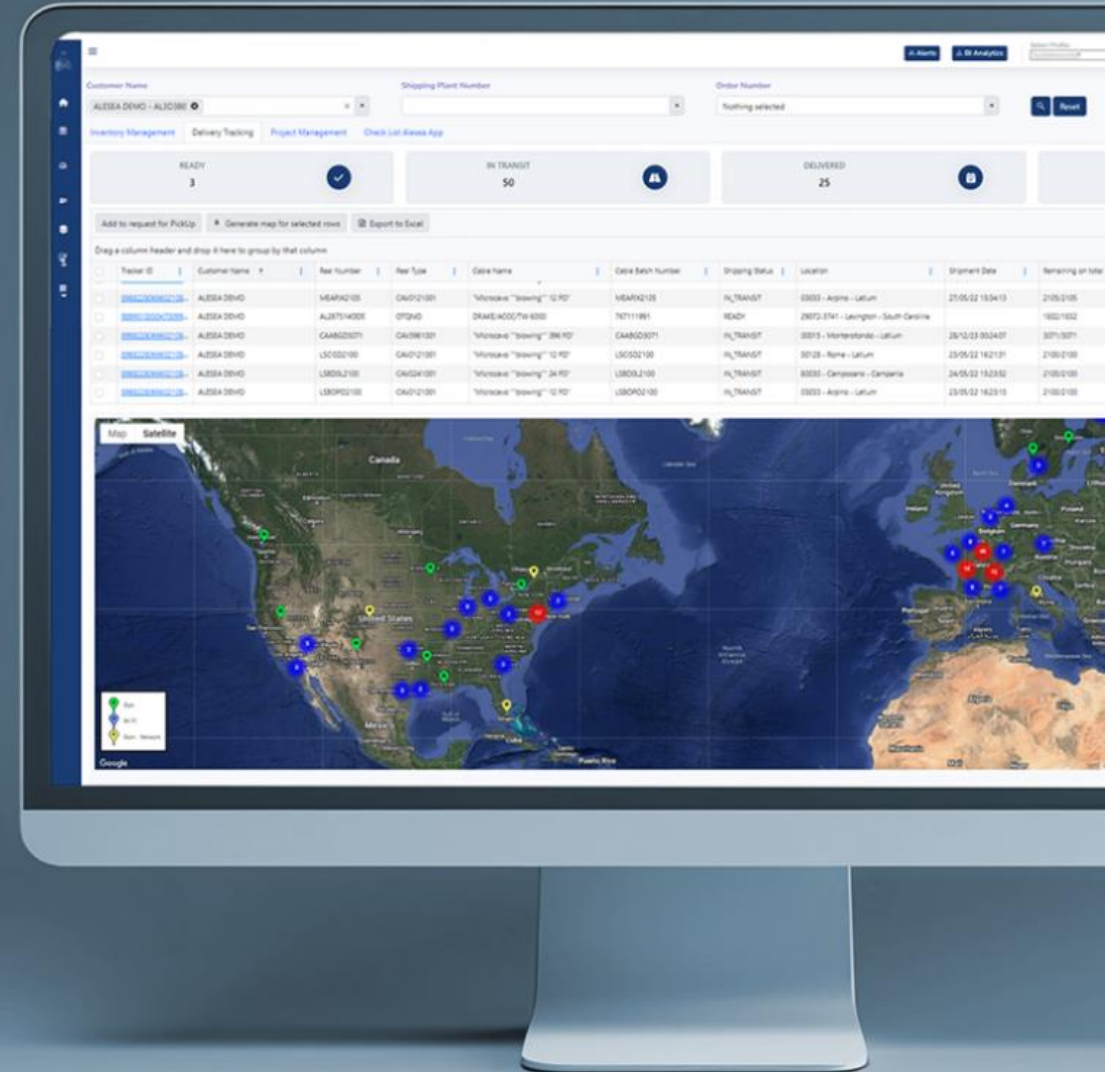
Log-in →

VIRTUAL BUSINESS ASSISTANT

Revolutionizing the cable drum industry with smart, digital solutions. Enhancing efficiency and sustainability in your supply chain.

Talk to Sales →

www.alesea.com





ALESEA

Actionable IoT data, valuable analytics & solutions for sustainable and efficient cable and drum management

Data Gathering



Alesea IoT Device 3x

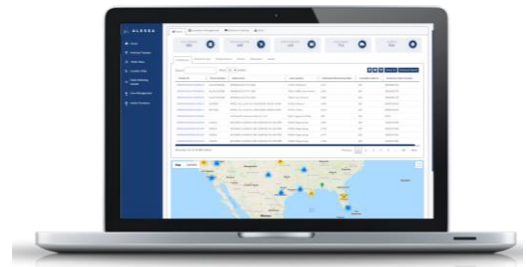


Alesea Lite Rfid Device



Data integration

Data Interaction Services



Web Portal



Alesea App



Alesea BI

Consultancy & Execution



Drum Management Consulting & Services

A snapshot of Alesea

>108k

Alesea connected drums

>100

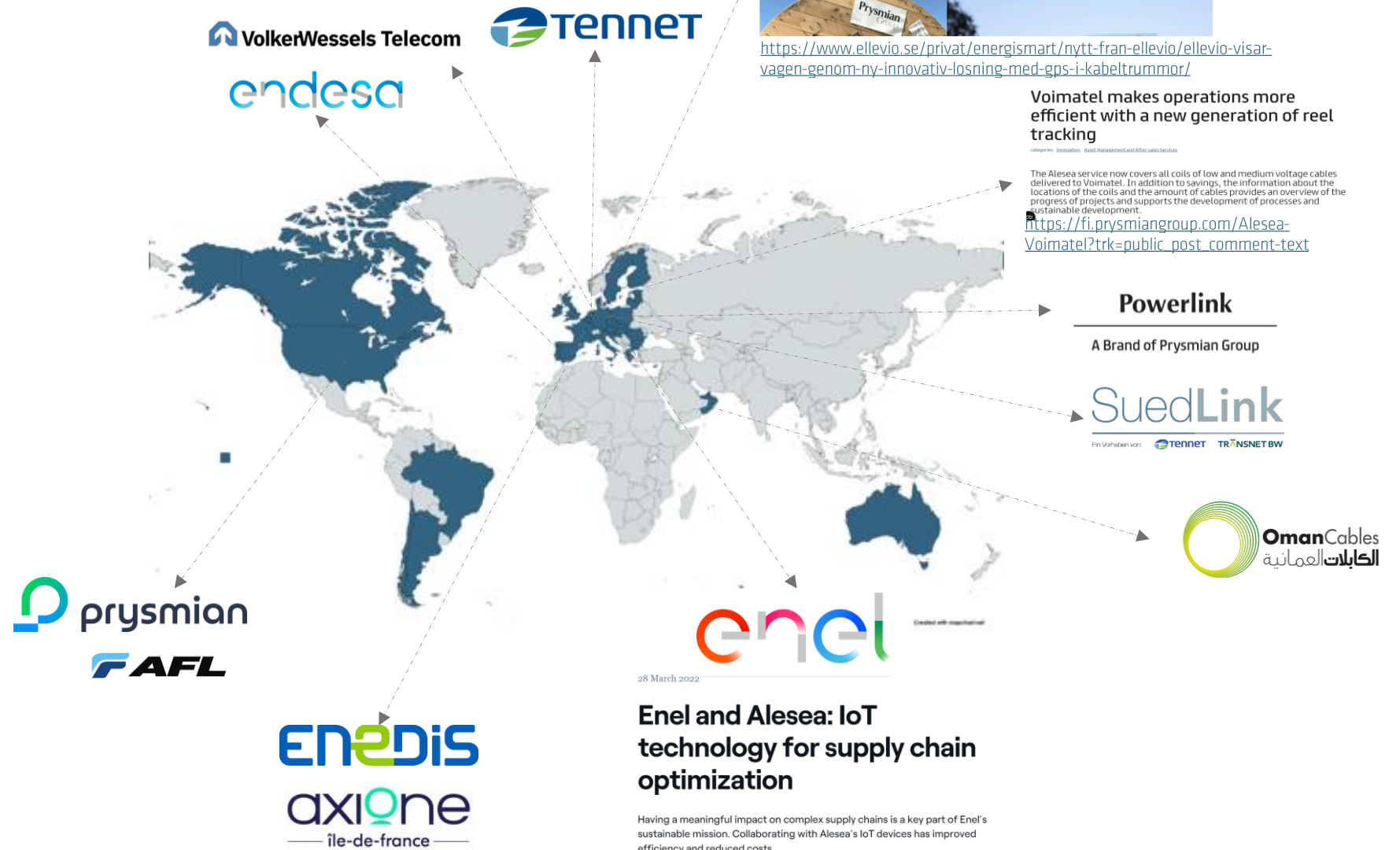
Active end customers in 5 continents

>8

Active cable manufacturers customers

14

Alesea Team (developers, IoT specialist, cable drum management consultants,..)



Ellevio shows the way through a new innovative solution with GPS in cable drums

May 30, 2023 | New from Ellevio



<https://www.ellevio.se/privat/energismart/nytt-fran-ellevio/ellevio-visar-vagen-genom-ny-innovativ-losning-med-gps-i-kabeltrummor/>

Voimatel makes operations more efficient with a new generation of reel tracking

www.voimatel.com/en/about-us/other-cable-services

The Alesea service now covers all coils of low and medium voltage cables delivered to Voimatel. In addition to savings, the information about the locations of the coils and the amount of cables provides an overview of the progress of projects and supports the development of processes and sustainable development.

https://fi.prysmiangroup.com/Alesea-Voimatel?trk=public_post_comment-text

Powerlink

A Brand of Prysmian Group

SuedLink

Ein Vorhaben von:



28 March 2022

Enel and Alesea: IoT technology for supply chain optimization

Having a meaningful impact on complex supply chains is a key part of Enel's sustainable mission. Collaborating with Alesea's IoT devices has improved efficiency and reduced costs.

[f](#) [t](#) [in](#) [e](#)

<https://openinnovability.enel.com/stories/articles/2022/03/alesea-supply-chain-optimization>



Alesea IoT Device | *Discover the technical elements that enable smart functionalities*

CONNECTIVITY

- Multi-network connection (LTE Cat M1, LTE Cat NB, EGPRS)
- Multi-carrier connectivity with automatic selection



POSITIONING

- Integrated global navigation module
- Multi-system geo-tracking support (GPS, Wi-Fi, GSM)



RESISTANCE GRADE IP67

- Water & dust resistant
- Immersion safe



ROTATION SENSORS

- Motion sensors installed for rotation detection (accelerometers, gyroscopes and digital compasses)
- Cable installation tracking thanks to our proprietary algorithm



AMBIENT SENSORS

- Internal thermometer
- Shock & axis inclination detection



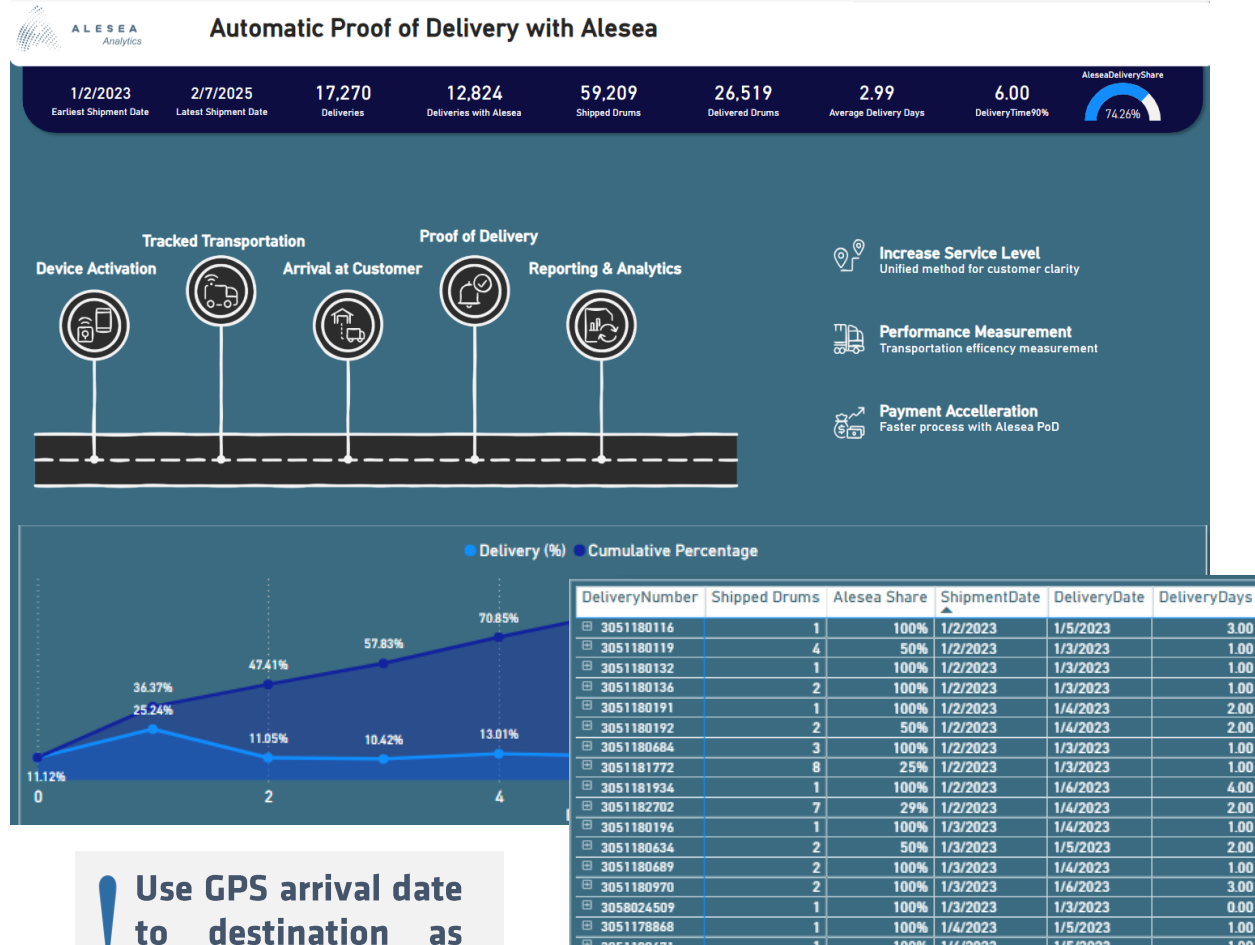
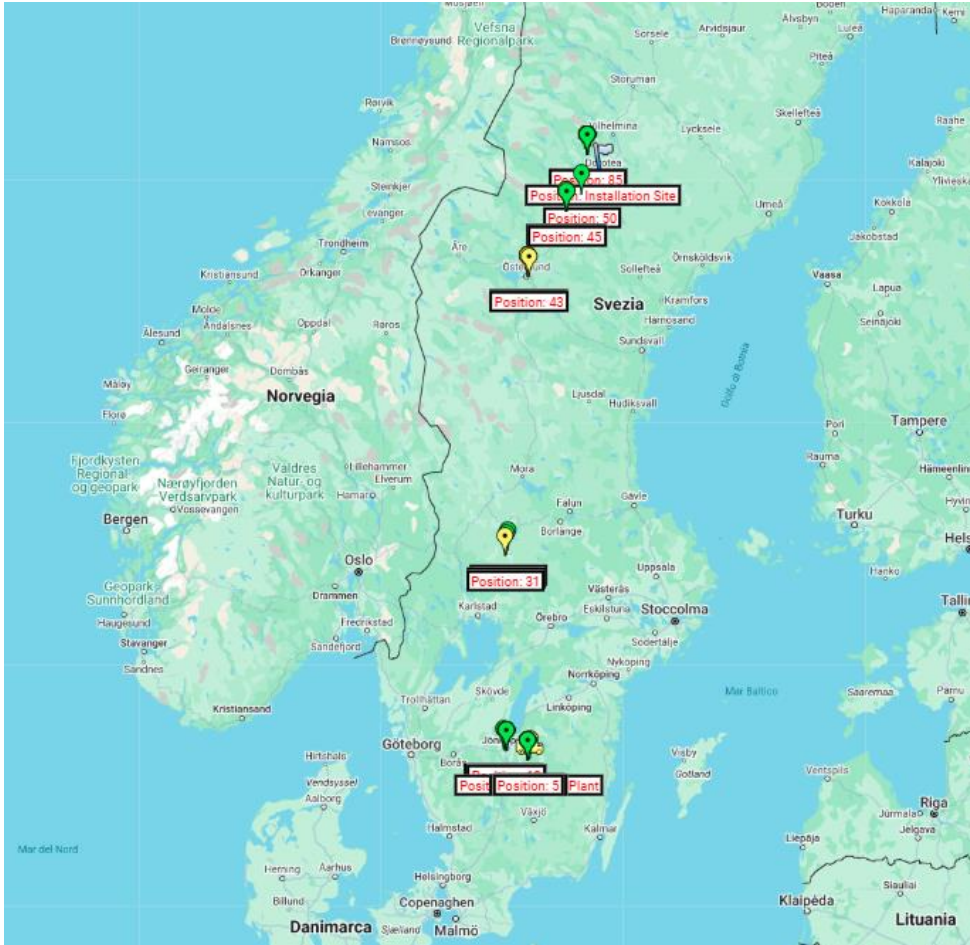
BATTERY MANAGEMENT

- Panasonic primary battery
- 3-year lifespan
- Event-based power optimization



The Alesea solution in action

1 TRACK CABLE DELIVERIES AND PROOF OF DELIVERY Follow Cable Drum Position On The Map



Use GPS arrival date to destination as Proof of Delivery

The Alesea solution in action | (Example of a Swedish customer)

2 MONITOR INVENTORY AT WAREHOUSE LEVEL – Check Availability Of Each Cable Drum Category

Tracker ID	Reel Number	Reel Type	Cable Name	Cable Batch N...	Shipping Status	Shipping Plan...	Location	Remaining on...	Available...	Cable Used	Customer Pur...	Full Formatted Address	County
89882280666114460920	DL14	DW3200A	AXLJ-RMF LT (24 kV, 3*95+16)	1028256766	DELIVERED	SE20	705 96 - Orebro - Orebro County	0/350	0%	350 m	IB340816/7543038	Lindvallsgatan, SE-705 96 Orebro, Sweden	Orebro
89882280666045019902	DL14	DW3140A	AXLJ-RMF Eco Cable (24 kV, 3*50+16)	1028076451	DELIVERED	SE20	705 96 - Orebro - Orebro County	0/60	0%	60 m	IB339533/7468272	Lindvallsgatan, SE-705 96 Orebro, Sweden	Orebro
89882280666045020108	DL14	DW3220A	AXQJ-RMF Pure 3x240/35 LT 12kV	1027486221	DELIVERED	SE20	703 81 - Orebro - Orebro County	6/375	1%	370 m	SA72648	Lindvallsgatan, SE-703 81 Orebro, Sweden	Orebro
89882280666114501903	DL11	DW3120A	SE-N1XE-AS 4G50 T500	1028765744	DELIVERED	SE20	703 81 - Orebro - Orebro County	80/500	15%	421 m	LR-13867	Lindvallsgatan 1, SE-703 81 Orebro, Sweden	Orebro
89882280666114595428	DL11	DW3160A	AXLJ-TTCL TSLF 1x95/25 AFR 12kV	1028850450	DELIVERED	SE20	705 96 - Orebro - Orebro County	494/1000	49%	506 m	Ir-14162	Lindvallsgatan, SE-705 96 Orebro, Sweden	Orebro
89882280666044984668	DL14	DW3180A	SE-N1XZ1-AS 4G150	1028839225	DELIVERED	SE20	705 96 - Orebro - Orebro County	500/500	100%	0 m	Ir-14162	Lindvallsgatan, SE-705 96 Orebro, Sweden	Orebro

10 items per page | 1 - 6 of 6 items

Selected rows: 1918



The Alesea solution in action | (Example of a Swedish customer)

3 VISUALIZE CABLE CONSUMPTION AND REMAINING QUANTITY

Tracker ID	Reel Number	Reel Type	Cable Name	Cable Batch N...	Shipping Status	Shipping Plan...	Location	Remaining on...	Available...	Cable Used	Customer Pur...	Full Formatted Address	County
89882280666114480920	DL14	DW3200A	AXLJ-RMF LT (24 kV, 3*95+16)	1028256766	DELIVERED	SE20	705 96 - Orebro - Orebro County	0/350	0%	350 m	IB340816/7543038	Lindvallsgatan, SE-705 96 Orebro, Sweden	Orebro
89882280666045019902	DL14	DW3140A	AXLJ-RMF Eco Cable (24 kV, 3*50+16)	1028076451	DELIVERED	SE20	705 96 - Orebro - Orebro County	0/60	0%	60 m	IB339533/7468272	Lindvallsgatan, SE-705 96 Orebro, Sweden	Orebro
89882280666045020108	DL14	DW3220A	AXQJ-RMF Pure 3x240/35 LT 12kV	1027486221	DELIVERED	SE20	703 81 - Orebro - Orebro County	6/375	1%	370 m	SA72648	Lindvallsgatan, SE-703 81 Orebro, Sweden	Orebro
89882280666114601903	DL11	DW3120A	SE-N1XE-AS 4G50 T500	1028765744	DELIVERED	SE20	703 81 - Orebro - Orebro County	80/500	15%	421 m	LR-13867	Lindvallsgatan 1, SE-703 81 Orebro, Sweden	Orebro
89882280666114595428	DL11	DW3160A	AXLJ-TTCL TSLF 1x95/25 AFR 12kV	1028850450	DELIVERED	SE20	705 96 - Orebro - Orebro County	494/1000	49%	506 m	lr-14162	Lindvallsgatan, SE-705 96 Orebro, Sweden	Orebro
89882280666044984688	DL14	DW3180A	SE-N1XZ1-AS 4G150	1028839225	DELIVERED	SE20	705 96 - Orebro - Orebro County	500/500	100%	0 m	lr-14162	Lindvallsgatan, SE-705 96 Orebro, Sweden	Orebro

Selected rows: 1918



Alesea tells you exactly when, where and how much cable was pulled

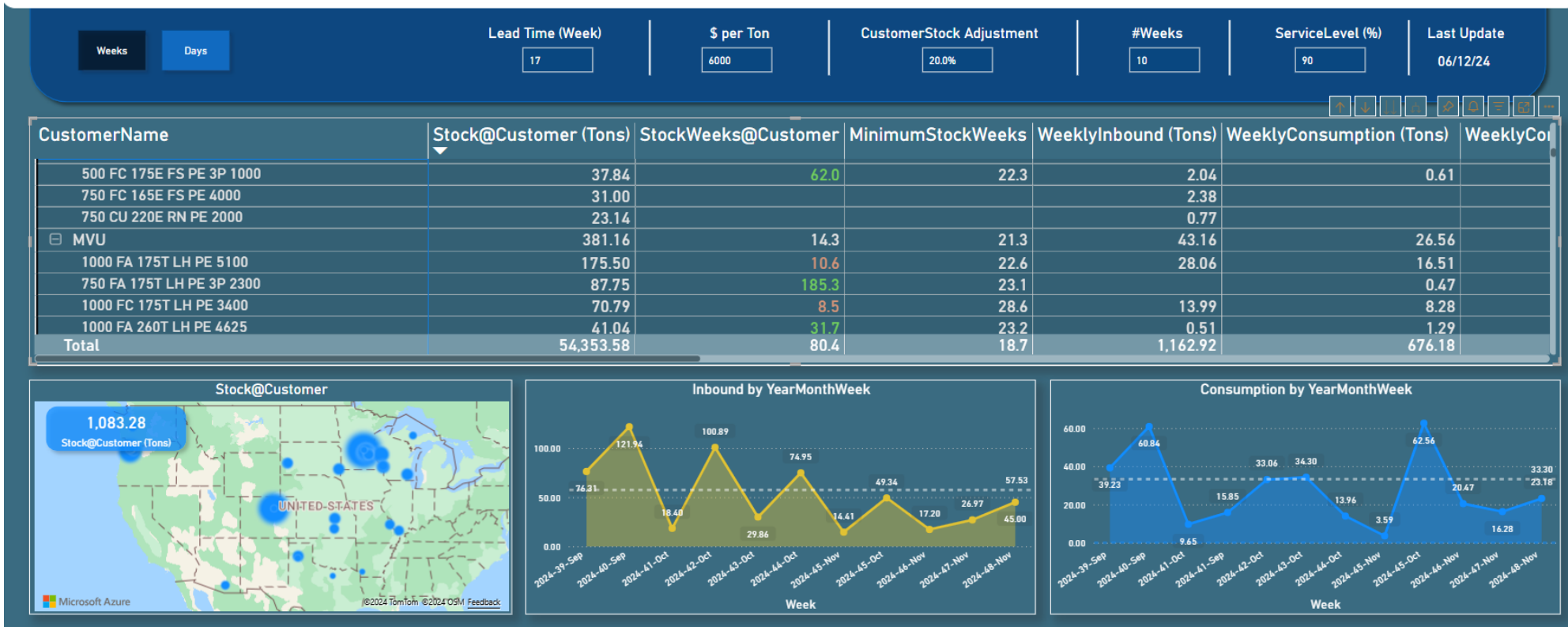
Action	Pos. N.	Date	Shipping Status	Estimated Remaining Cable	Cable Installed	Available Cable %	Delta Spins	Address
🔄	57	09/20/2024 10:55:26 A...	DELIVERED	26 m	8	44	3	Vrånghult Kristineberg, SE-597 91 Åtvidaberg, Sweden
🔄	57	09/20/2024 10:55:26 A...	DELIVERED	26 m	8	44	3	Vrånghult Kristineberg, SE-597 91 Åtvidaberg, Sweden
🔄	55	09/19/2024 11:41:09 A...	DELIVERED	34 m	8	57	3	Vrånghult Kristineberg, SE-597 91 Åtvidaberg, Sweden
🔄	52	09/16/2024 5:25:15 PM	DELIVERED	42 m	17	70	6	Vrånghult Gustavborg, SE-597 91 Åtvidaberg, Swed...
🔄	51	09/16/2024 3:18:12 PM	DELIVERED	60 m	0	100	0	Vrånghult Gustavborg, SE-597 91 Åtvidaberg, Swed...

The Alesea solution in action | (Example of a utility customer)

4 CABLE STOCK CONTROL BI - Check How Many Weeks Or Days Of Stock You Have Based On Your Consumption

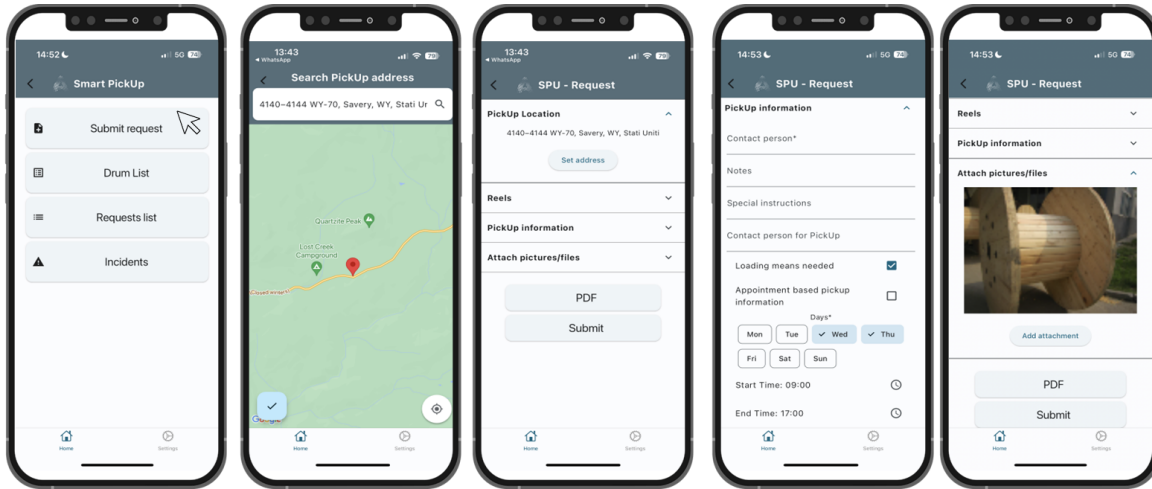


Cable Stock Control on Alesea Drums



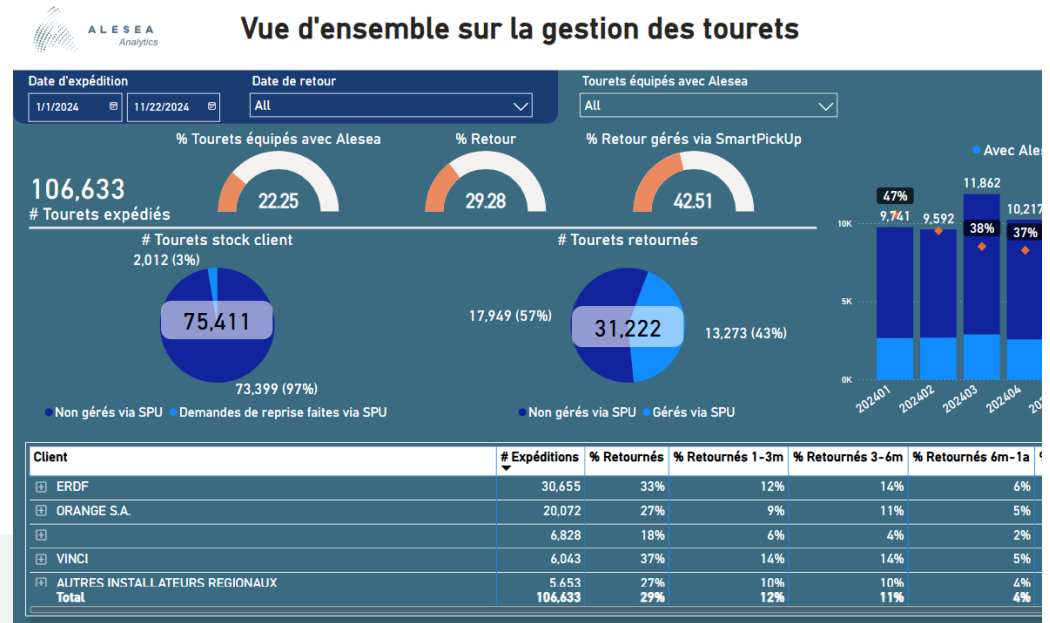
The Alesea solution in action | (Example of a French customer)

5 SMART PICKUP MODULE – Interact With Transporters, Pickup Your Drums & Measure Returnability Performance



! Get to know remotely when a drum becomes empty thanks to the device

! Request drums to be picked up directly on your smartphone & transport companies will be notified



SMART PICK-UP MODULE ALLOWS ALSO THE RETURN OF DRUMS WITH LEFTOVER

The Alesea solution in action

6 **CLEPATH MODULE (ready in H1 2025)** – Measure your CO2 footprint (cables, outbound deliveries and scrap reporting)

The screenshot displays the Clepath web application interface. The header includes the ALESEA logo and the Clepath logo with the tagline 'GREEN SUPPLYCHAIN'. The main title is 'Outbound Logistic emissions & CO2 Emissions'. The interface shows filters for Plant (ND70), BU, Client, and a date range (1 Jan - 31 Jan, 24). A 'Report' button is visible. The main content area is divided into three sections:

- CO₂ Emissions by Transport Type**: A table showing the percentage and tonnage of CO₂ emissions for different transport modes.
- Shipping CO₂ and Efficiency Metrics**: A summary of key metrics including total CO₂, total number of shipments, total tonnage shipped, and CO₂/TONS.
- CO₂ Emissions per Shipment**: A table listing individual shipments with their numbers and corresponding CO₂ emissions.

At the bottom, there is a 'Monthly CO₂ by Transport Type' bar chart showing emissions in Ton CO₂ for January, February, March, and April, broken down by transport type: Truck, Ship, Airplane, and E-truck.

Transport Type	Percentage	Ton CO ₂
Truck	30%	360
Ship	40%	480
Airplane	25%	300
E-truck	5%	60

TOTAL CO ₂	1200 CO ₂ ton eq
TOTAL NUMBER OF SHIPMENTS	340
TOTAL TON SHIPPED	15010
CO ₂ /TONS	0.08

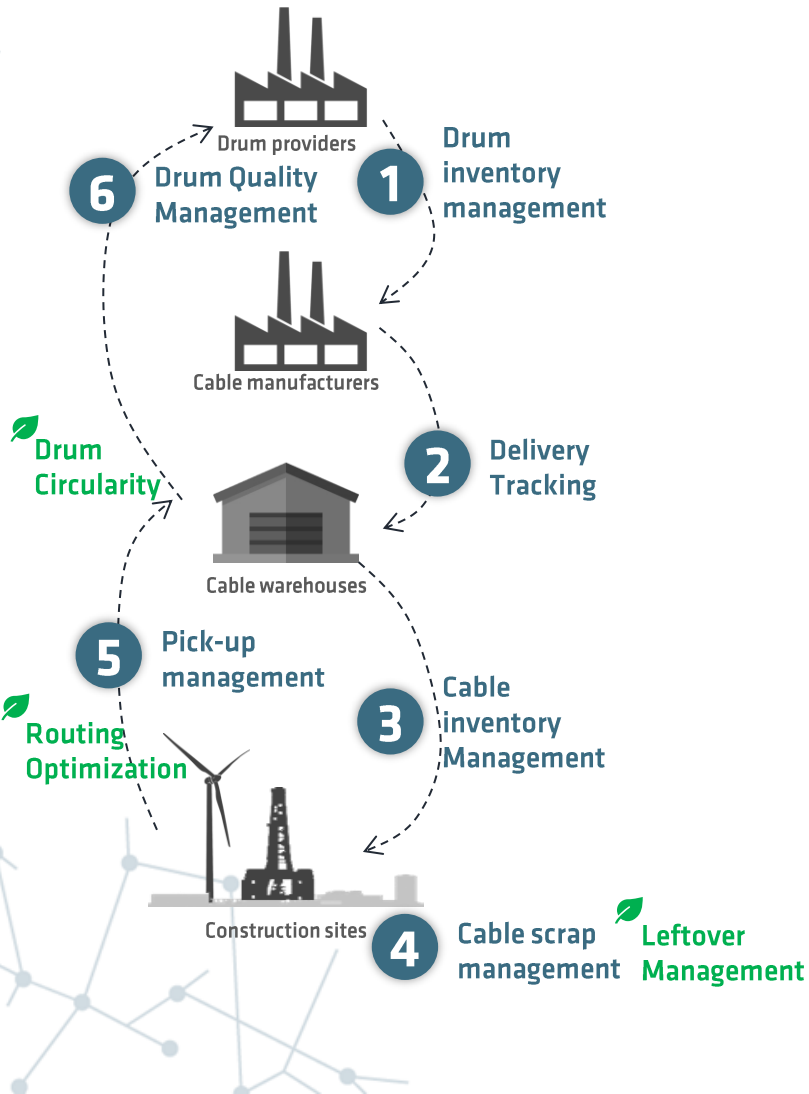
Shipment number	TON CO ₂ eq.
12394750938835	40
48327559043930	70
52989348239048	140
4438239480606	102

Month	Truck	Ship	Airplane	E-truck
January	4	4	2	1
February	3	4	2	1
March	3	4	2	1
April	4	4	2	1

Extract value across the whole cable management process



Alesea creates value improving efficiency, service level, and sustainability for multiple actors of the supply chain: from drum providers, to cable manufacturers to cable end users



Drum circularity | +10% drums returned

-263 CO2 Tons | 8k Trees saved

Leftover management | -25% cable scrapped

-1.306 CO2 Tons | 40k Trees saved

Routing optimization | -10% travelled distance

-223 CO2 Tons | 7k Trees saved

-1.791 CO2 TONS | 55 k TREES SAVED*

Alesea for sustainability in practice: examples



1 DRUM CIRCULARITY RETURN OF DRUMS TO MANUFACTURER FASTER AND IN BETTER CONDITIONS

- DRUM GEO-LOCALIZATION MODULE
- ALESEA ENABLERS EMPTY DRUMS LIST & PICK-UP
- DRUM'S HEALTH - POSITIONING, SHOCKS, TEMPERATURE

2 LEFTOVER MANAGEMENT REDUCTION OF SCRAP BY GIVING VISIBILITY OF LEFTOVERS AND CABLE CONSUMPTION

- ALESEA ENABLERS CABLE METERING & INVENTORY VISIBILITY
- INSTALLATION CONSUMPTION MONITORING

3 TRANSPORT ROUTING OPTIMIZATION COLLECTION OF MORE DRUMS WITH THE SAME TRANSPORT

- DRUM GEO-LOCALIZATION MODULE
- ALESEA ENABLERS EMPTY DRUMS LIST & PICK-UP
- TRANSPORT ROUTING OPTIMIZATION AI ENGINE*

* We develop this module based on customer needs

Alesea as a platform to integrate other connected assets



Alesea Cloud Portal and Bi & Analytics

Small Drums



Monitor small drums with RFID technology:

- Monitor Drum Inbound and Outbound
- Monitor warehouse/plant movements
- Provide info on the material to customers

IoBox

Track the shipment of high-value assets, their condition and utilization:

- Opening of the box.
- Position
- Temperature
- Humidity
- Shocks



IoContainer

Track Construction containers to:

- Monitor their location
- Perform checklists on the materials
- Control accesses and openings
- Measure temperature and water presence



IoCabinet

Track Street Cabinets to:

- Control accesses and openings
- Perform checklists on maintenance activities
- Measure temperature and water presence
- Optimize maintenance intervention



A L E S E A

YOUR VIRTUAL ASSISTANT FOR CABLE MANAGEMENT

www.alsea.com